



[I-21/355/2023-W&M Section]
GOVERNMENT OF INDIA/भारत सरकार
MINISTRY OF CONSUMER AFFAIRS, FOOD AND PUBLIC DISTRIBUTION
उपभोक्ता मामले, खाद्य एवं सार्वजनिक वितरण मंत्रालय
DEPARTMENT OF CONSUMER AFFAIRS/ उपभोक्ता मामले विभाग
LEGAL METROLOGY DIVISION/ विधिक मापविज्ञान प्रभाग

Krishi Bhawan/कृषि भवन, नई दिल्ली
Dated/दिनांक:- 23.02.2024

Certificate of Approval of Model/ मॉडल का अनुमोदन प्रमाणपत्र

Whereas the Central Government, after considering the report submitted to it by prescribed authority, is satisfied that the model described in the said report (see the figure given below) is in conformity with the provisions of the Legal Metrology Act, 2009 (1 of 2010) and the Legal Metrology (Approval of Models) Rules, 2011 and the said model is likely to maintain its accuracy over periods of sustained use and to render accurate service under varied conditions;

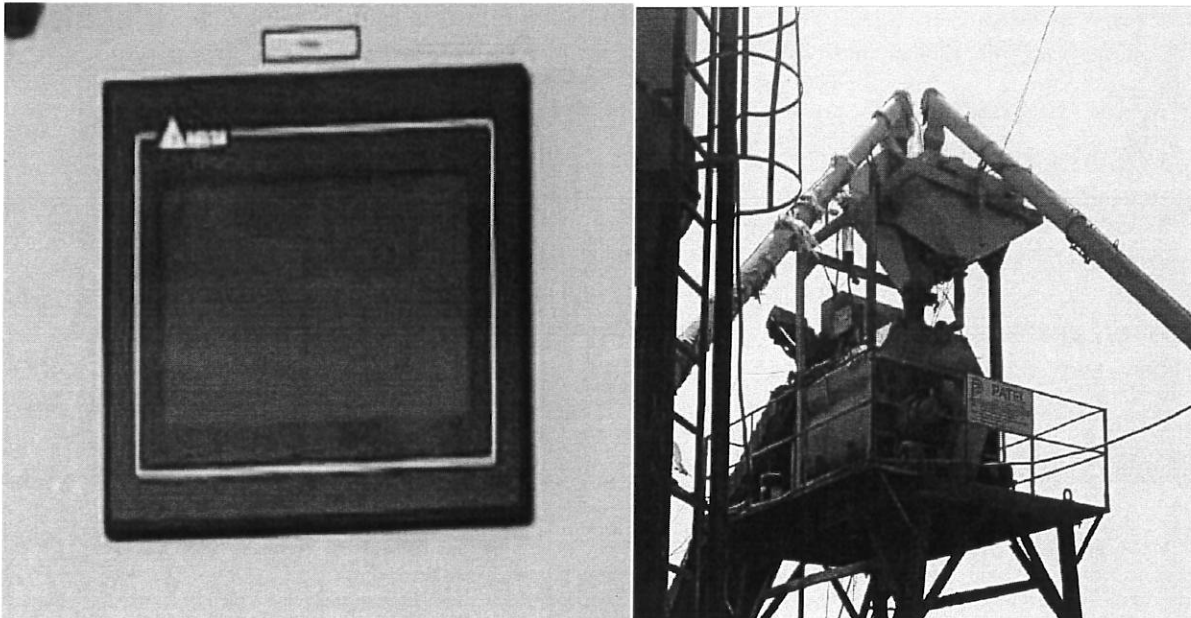
Now, therefore, in exercise of the powers conferred by section 22 of the Legal Metrology Act, 2009 (1 of 2010) read with sub-rule (6) of rule 8 and sub-rule (4) of rule 11 of the Legal Metrology (Approval of Models) Rules, 2011, as per Schedule Seventh of the Legal Metrology (General) Rules, 2011 the Central Government hereby issues the certificate of approval of Discontinuous Totalizing Automatic Weighing Instruments (Totalizing Hopper Weighers) with of accuracy class 2 of series "PATEL" and with brand name "PATEL INFRA" (hereinafter referred to as the said model), manufactured by M/s Patel Infra Technology, 55-57, Shiv Industrial Park, Heduva- Rajgar, Nr. Mehsana Bypass Road, Mahesana, Gujarat-384435 and which is assigned the approval mark IND/09/24/88 (the picture of the model is given below as Figure 1);

The said model is Discontinuous Totalizing Automatic Weighing Instruments (Totalizing Hopper Weighers) and used as Totalizing Hopper Weigher- Batching System type weighing instrument.

Technical Data:

Working Principle	Electronic and Load cell based
Mass Measuring Device	Strain Gauge Type of Load cell
Accuracy class	2
Max. Capacity	3000kg
Min. Capacity	200kg
Min. Totalized load Σ min	200kg
Totalization scale interval (dt)	1kg
Output at max operating speed	150 tonne per hour (max)
Display	TFT (Touch Screen Type)
Material to be handle	Cement, sand, water, admixture etc.
Power Supply	415 V, 50 Hz AC

Figure 1



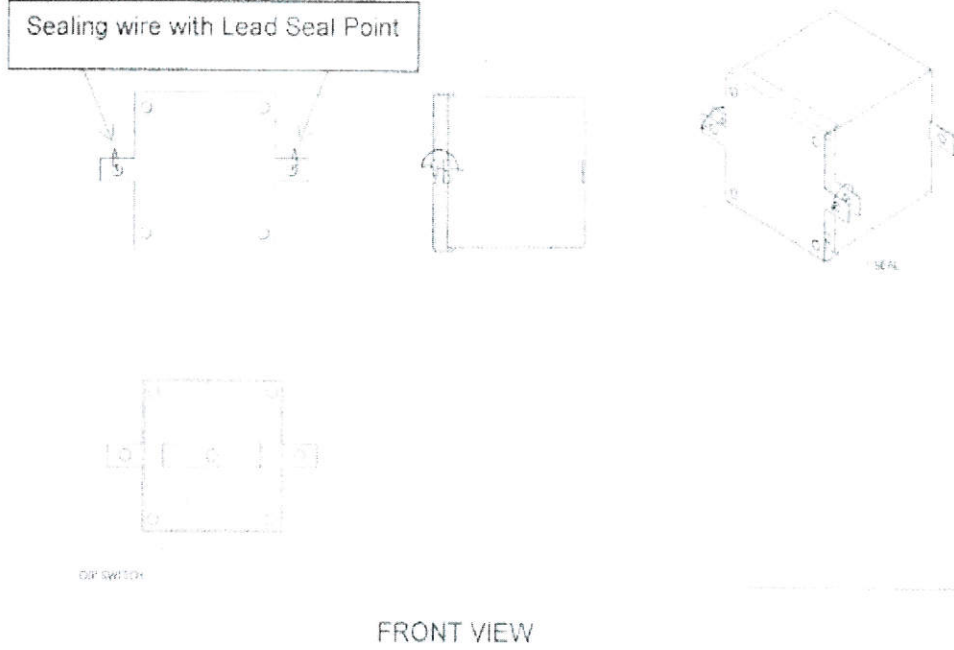


Figure 2

Sealing is done by passing the sealing wire through the holes provided on the body of machine. A lead seal is put at the end of the wire for stamping purpose (a typical schematic diagram of sealing provision to prevent the fraudulent practices of the model is given above as Figure 2). A dip switch has also been provided in mother board/PCB to disable access to external calibration.

Further, in exercise of the power conferred by sub-rule (9) of rule 8 of the Legal Metrology (Approval of Models) Rules, 2011, the Central Government hereby declares that this certificate of approval of the said model shall also cover the weighing instruments of similar make, accuracy and performance of same series with maximum capacity upto 7500kg manufactured by the same manufacturer in accordance with the same principle, design and with the same materials with which, the said approved model has been manufactured.

[F.No. I-21/355/2023-W&M Section]

Ashutosh Agarwal

(Ashutosh Agarwal/आशुतोष अग्रवाल)
I/c Director (Legal Metrology) to Govt. of India/ प्रभारी निदेशक (विधिक माप विज्ञान) भारत सरकार
Phone/दूरभाष 01123389489
Email/ई-मेल: dirwm-ca@nic.in

Online Application No. 16586